

OOH Media Owner

nalesa
media

RATE CARD

ALL INVENTORY

Who We Are:



Mission

Provide service and quality excellence Nurture the spirit of entrepreneurship in all our business. Respond to the needs of our clients, brands and end-user. Encourage creativity and innovation.

Vision

To create a world class, 100% AFRICAN FEMALE BUSINESS that responds to the needs of the industry which we operate in. We aspire to close the digital divide by making technology more accessible and easier to use for both young and old.

Values

Uncompromising Quality of work, Integrity, Boldness & Result oriented





nalesa
media

STATIC LARGE
FORMATS

STATIC LARGE FORMATS

Site Name	Description	Total Ex. VAT
NM001 2.8M impressions	Situated in Illovo on Rivonia Road. This 3m x 104m site is situated opposite St. Davids. +/- 2.8M impressions	R150 000.00
NM002 +/- 1.3M impressions	Situated on the cnr. of Klipspruit & Sofasonke. This 5m x 30m site is a stone throw away from Vilakazi str.	R150 000.00
NM/MAP/VAG +/- 3.6M impressions	Virgin Active Glass next to Maponya Mall is 11m x 28,5m in size and uses contra-vision application	R150 000.00
NM/MAP/GWE +/- 1.4M impressions	A Glass Wrap with a size of 4m x 30m is situated one of Maponya Mall's busiest Mall Entrances	R60 000.00
NM/MAP/TR +/- 2.6M impressions	This 5m x 30m site located at the transportation hub of Maponya Mall also offers 6 panels.	R80 000.00
NM/MAP/HAE +/- 3.6M impressions	This 5m x 30m site located at the home affairs gate of Maponya Mall gets over 3M impressions a month from LSM1 -10 markets.	R80 000.00
NM/MAP/CHB +/- 3.6M impressions	This 5m x 30m site located on the busiest Road into Soweto at the most visited Mall in Gauteng.	R80 000.00
NM/PAN/001 +/- 6.5M impressions	A massive 7,5m x 53m billboard overlooking PAN Africa Mall in Alexandra.	R80 000.00
NM/PAN/002&3 +/- 6.5M impressions	These 4m x 15m Billboards at the PAN Africa Taxi rank in Alexandra will make an impact.	R30 000.00
NM/PAN/SNDVW +/- 5.5M impressions	A massive 6m x 58,5m Billboard overlooking the Old Pretoria rd & Watt rd intersection of the industrial area of Wynberg.	R125 000.00



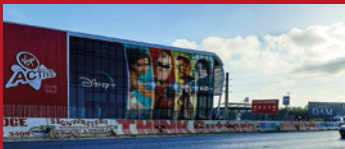
NM001

Production
R66 780 ex. VAT



NM002

Production
R31 500 ex. VAT



NM/MAP/VAG

Production
R65 835 ex. VAT



NM/MAP/TR

Production
R31 500 ex. VAT



NM/MAP/VB

Production
R31 500 ex. VAT



NM/MAP/CHB

Production
R31 500 ex. VAT



NM/MAP/GWE

Production
R29 200 ex. VAT



NM/PAN/001

Production
R83 475 ex. VAT



NM/PAN/002&3

Production
R12 600 ex. VAT



NM/PAN/SNDVW

Production
R73 710 ex. VAT



nalesa
media

WALL MURALS

WALL MURALS (MAIN ROADS)

Site Name	Description	Total Ex. VAT
NM/WALL/LN +/- 10.5M impressions	2m x 10m Wall Mural on Lilian Ngoyi Str. at Bara clinic	R25 000.00
NM/WALL/CC +/- 2.5M impressions	2m 10m Wall Mural at the Chiawelo Clinic on Chris Hani Rd., the busiest street in Soweto	R25 000.00
NM/WALL/M +/- 600k impressions	2m x 10m Wall Mural in Meadowlands. Gets about 600 000 impressions monthly	R25 000.00

WALL MURALS (IN-BURB ROADS)

NM/WALL/MP +/- 450k impressions	2m x 10m Wall Mural at the Mfulu Park clinic, LSM1-8, roughly 450 000 impressions monthly	R20 000.00
NM/WALL/T +/- 450k impressions	2m x 10m Wall Mural at the Tladi clinic, LSM1-8, gets roughly 450 000 impressions monthly	R20 000.00
NM/WALL/Z +/- 450k impressions	2m x 10m Wall Mural at the Zola clinic, LSM1-8, estimates 450 000 impressions monthly	R20 000.00

WALL MURALS (MAIN ROADS)



NM/WALL/LN R25 000 EX. VAT
PRODUCTION: R12 000 EX. VAT



NM/WALL/CC R25 000 EX. VAT
PRODUCTION: R12 000 EX. VAT



NM/WALL/M R25 000 EX. VAT
PRODUCTION: R12 000 EX. VAT

WALL MURALS (IN-BURB ROADS)



NM/WALL/MP R20 000 EX. VAT
PRODUCTION: R12 000 EX. VAT



NM/WALL/T R20 000 EX. VAT
PRODUCTION: R12 000 EX. VAT



NM/WALL/Z R20 000 EX. VAT
PRODUCTION: R12 000 EX. VAT



Next level Support

nalesa
media

**DIGITAL SCREENS
& OTHER STATIC**

Choose a dololo monthly fee across

23rd May 2022

Maponya Mall,
Soweto

Visit nalesa.co.za

#nalesamall

Maponya Mall

Maponya Mall

Maponya Mall

Maponya Mall

Maponya Mall

Maponya Mall

Maponya Mall

Maponya Mall

Maponya Mall

Maponya Mall

Maponya Mall

Maponya Mall

Maponya Mall

Maponya Mall

Maponya Mall

Maponya Mall

Maponya Mall

Maponya Mall

DIGITAL SCREENS

Site Name	Description	Total Ex. VAT
NM/MAP/EXTLED +/- 1.8M impressions	The 3m x 6m Maponya Mall External Digital Screen is the second most seen screen in Soweto	R28 000.00
NM/MAP/INTLED +/- 1.4M impressions	This 4m x 8m screen is situated at the food court of Maponya Mall, which is the most visited mall in Gauteng.	R28 000.00
NM/SWT/EXTLED +/- 1.6M impressions	3m x 6m Screen on Bolani Rd. Across from Jabulani Mall in Soweto.	R28 000.00

OTHER STATIC

NM/MAP/T +/- 1.4M impressions	Four, 4m x 1m ⁴ Towers at Maponya Mall that get over 1 Million impressions per month.	R20 000.00 ea
NM/MAP/TR-PAN 1-6 +/- 1.4M impressions	Choose 1 of 6 panels at the transportation hub of Maponya Mall that will best fit your target audience.	R30 000.00
NM/PAN/BR01-A & B +/- 6.5M impressions	Two, 2m x 12m Gantry Billboards overlooking a busy road linking PAN Africa Mall and Taxi Rank. +- 2.4mill impressions monthly	R80 000.00 (4 Bridges)
NM/PAN/BR02-A & B +/- 6.5M impressions	Two, 2m x 12m Gantry Billboards overlooking a busy road linking PAN Africa Mall and Taxi Rank. +- 2.4mill impressions monthly	R80 000.00 (4 Bridges)

NM/MAP/EXTLED

The 3m x 6m Maponya Mall External Digital Screen is the second most seen screen in Soweto

R28 000 ex. VAT

Production
FREE

NM/MAP/INTLED

This 4m x 8m screen is situated at the food court of Maponya Mall, which is the most visited mall in Gauteng

R28 000 ex. VAT

Production
FREE

NM/MAP/TR-PAN 1-6

Choose 1 of 6, 2m x 3m panels at the transportation hub of Maponya Mall that will best fit your target audience.

R30 000 ex. VAT

Production
R1 260 ex. VAT

NM/MAP/T

Four, 4m x 1m4 Towers at Maponya Mall that get over 1 Million impressions per month.

R20 000 ex. VAT

Production
R66 780 ex. VAT

NM/PAN/BRO1-A & B

Two, 2m x 12m Gantry Billboards overlooking a busy road linking PAN Africa Mall and Taxi Rank. +- 2.4mill impressions monthly

R40 000 ex. VAT

Production
R10 080 ex. VAT

NM/PAN/BRO2-A & B

Two, 2m x 16m Gantry Billboards overlooking a busy road linking PAN Africa Mall and Taxi Rank. +- 2.4mill impressions monthly

R40 000 ex. VAT

Production
R13 440 ex. VAT

nalesa
media

IN-MALL
INVENTORY

IN-MALL INVENTORY

Site Name	Description	Total Ex. VAT
NM/MAP/HBFC +/- 1.4M impressions	Six, 6m x 2m Hanging banners located in the Food Court of Maponya Mall which has a high dwell time	R25 000.00
NM/MAP/HBAM +/- 1.4M impressions	Twenty-six, 3m x 1m Hanging banners across the entire Maponya Mall which gets over 1.4mill in foot traffic monthly	R32 000.00
NM/MAP/ED +/- 1.4M impressions	Two elevators and 3 floors gives you visibility at 6 touch points of the mall's elevator doors.	R60 000.00
NM/MAP/E-I +/- 1.4M impressions	Two Elevators at Maponya Mall you can get creative with on the inside while people are going floor-to-floor	R60 000.00
NM/MAP/ESC-PAN +/- 1.4M impressions	There are two escalators at Maponya Mall with 4 panels each which gives you 8 panels to brand.	R30 000.00
NM/MAP/ESC-STEPS +/- 1.4M impressions	The two escalators at Maponya Mall also give you an opportunity to brand the steps.	R30 000.00

PACKAGE

PACKAGE



NM/MAP/HBFC R25 000 EX. VAT
PRODUCTION: R15 120 EX. VAT



NM/MAP/HBAM R32 000 EX. VAT
PRODUCTION: R16 380 EX. VAT



NM/MAP/ED R60 000 EX. VAT
PRODUCTION: R1 200 EX. VAT



NM/MAP/E-I R60 000 EX. VAT
PRODUCTION: R1 200 EX. VAT



NM/MAP/ESC-PAN R30 000 EX. VAT
PRODUCTION: R



NM/MAP/ESC-STEPS R30 000 EX. VAT
PRODUCTION: ENQUIRE

CONTACT US

Pat Ndlovu

Sales & Marketing



063 098 7232



patrick@nalesamedia.co.za

Hloni Tsubele

Design & Production



081 707 5652



hloni@nalesamedia.co.za

Martha Seemola

Research



081 394 4619



martha@nalesamedia.co.za

 Nalesa Media

 @nalesamedia

 @MediaNalesa

 Nalesa Media Africa

 010 448 1399

 32 Fricker str., Illovo

 www.nalesamedia.co.za

Si cover iScore

